

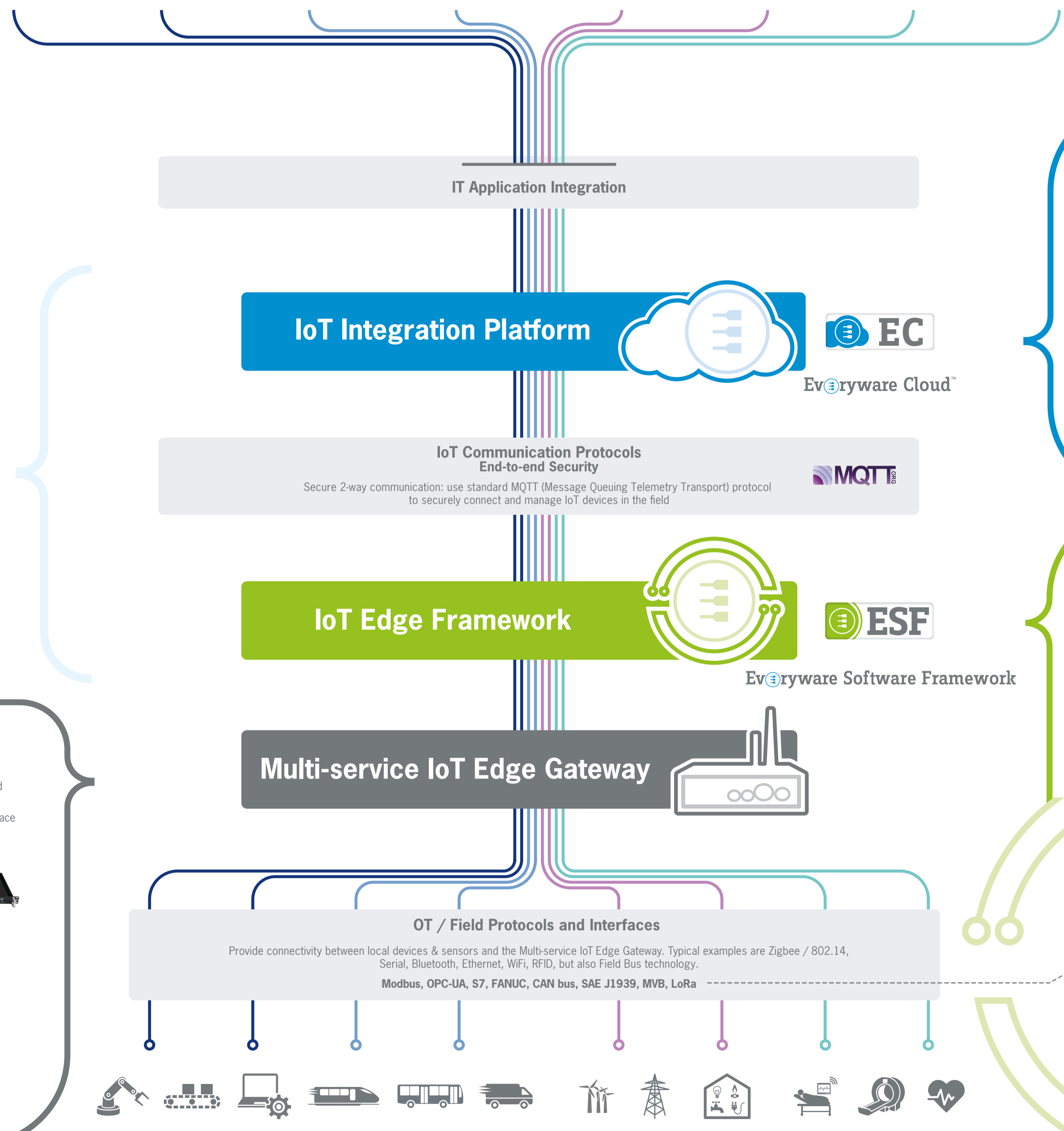
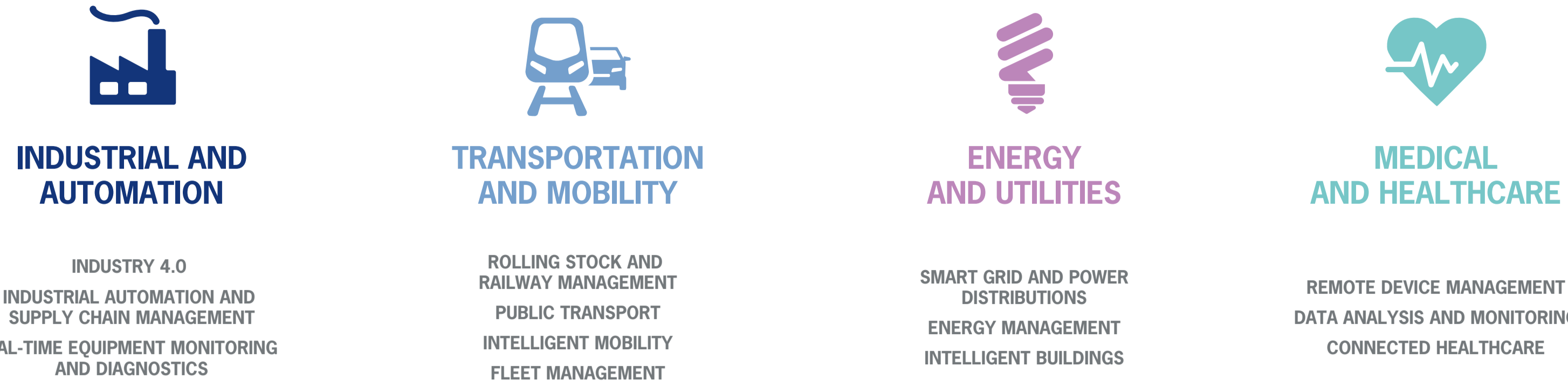
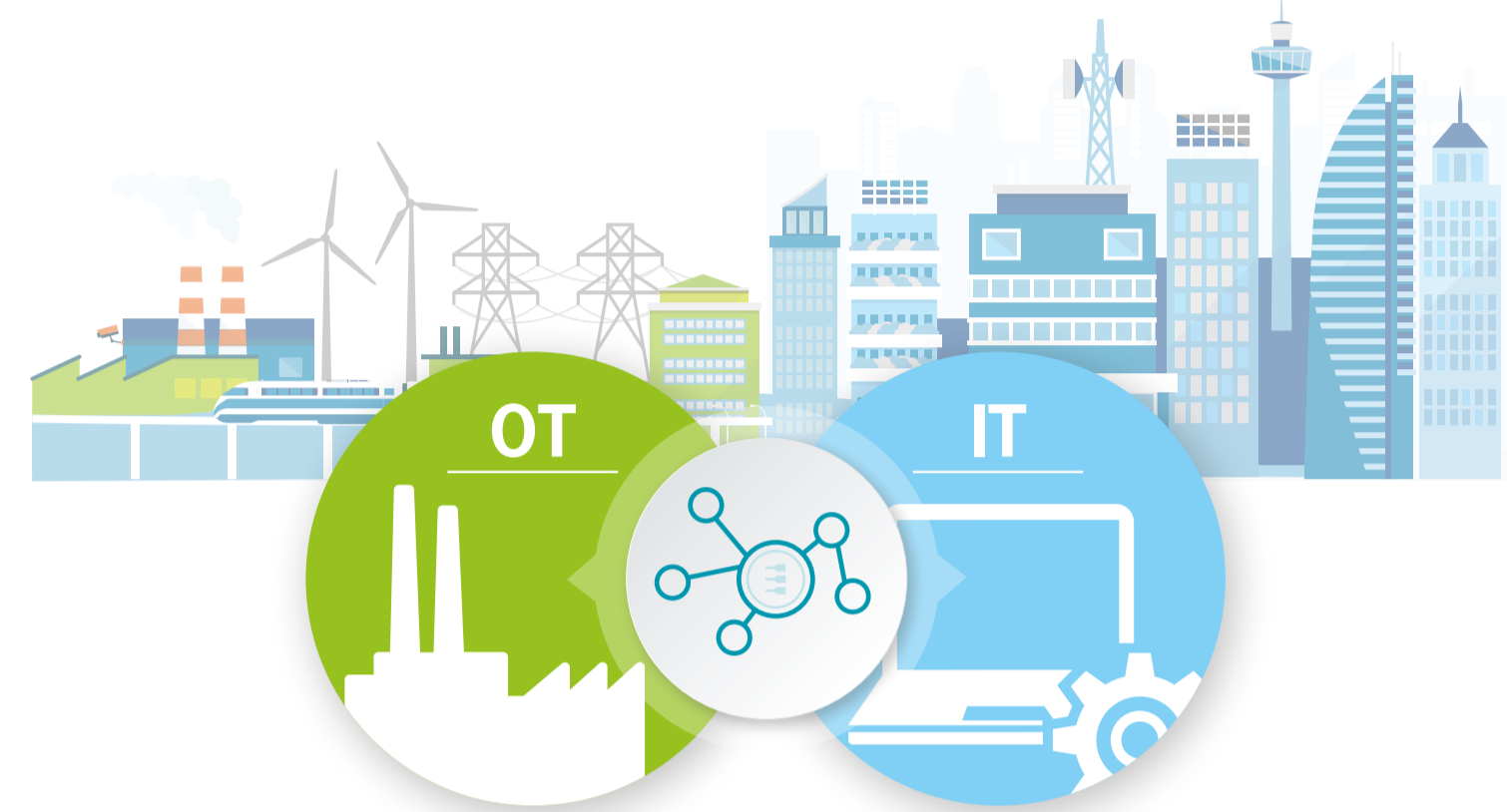
# EUROTECH

## Everyware IoT

OPEN. INTEGRATED. MANAGED.

### OT-IT Integration

Everyware IoT enables enterprise-class digital transformation at the edge of the network. It seamlessly integrates Operational Technology (OT) with Information Technology (IT), bridging the interoperability of an organization's IT infrastructure with remotely located IoT assets. The powerful and flexible Everyware IoT platform enables edge devices and systems to be easily deployed, managed and maintained from virtually anywhere.



### End-to-end IoT Security

- Cloud Security**
- Validated platform identity
  - Tenant isolation
  - Role-based access control
  - 2-factor authentication
  - Integrated certificate management

- Secure Communication**
- SSL/TLS Encryption w/hostname verification
  - Mutual authentication
  - Digitally signed messages

- Edge Security**
- Unique device identity and credentials
  - Signed ESF/application code
  - Encrypted configuration and storage
  - Secure OTA update
  - Secure boot

- Security Services**
- Support and maintenance plans for long-life management
  - Periodic code scans to detect new common vulnerabilities and exploitations
  - Emergency patches to address critical functional or security issues

### Multi-service IoT Edge Gateways

Eurotech's Multi-service IoT Edge Gateways are edge computing devices that offer a wide range of performance, networking and ruggedization options designed for today's demanding industrial IoT applications. Eurotech Multi-service IoT Edge Gateways are available with industry-specific certifications to meet the needs of various industry verticals including Automotive, Military/Aerospace and Railway applications. They feature global cellular connectivity certification.



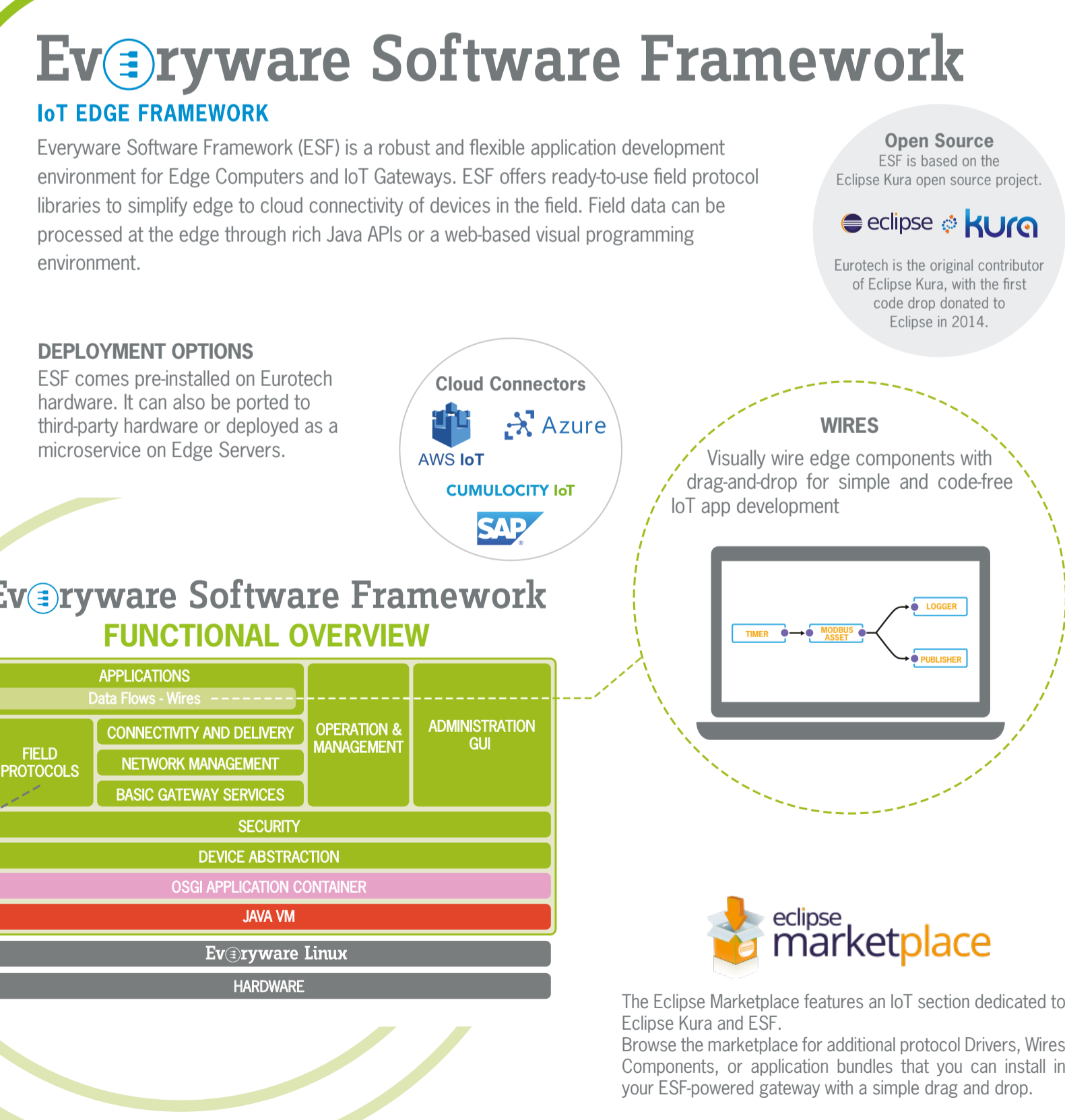
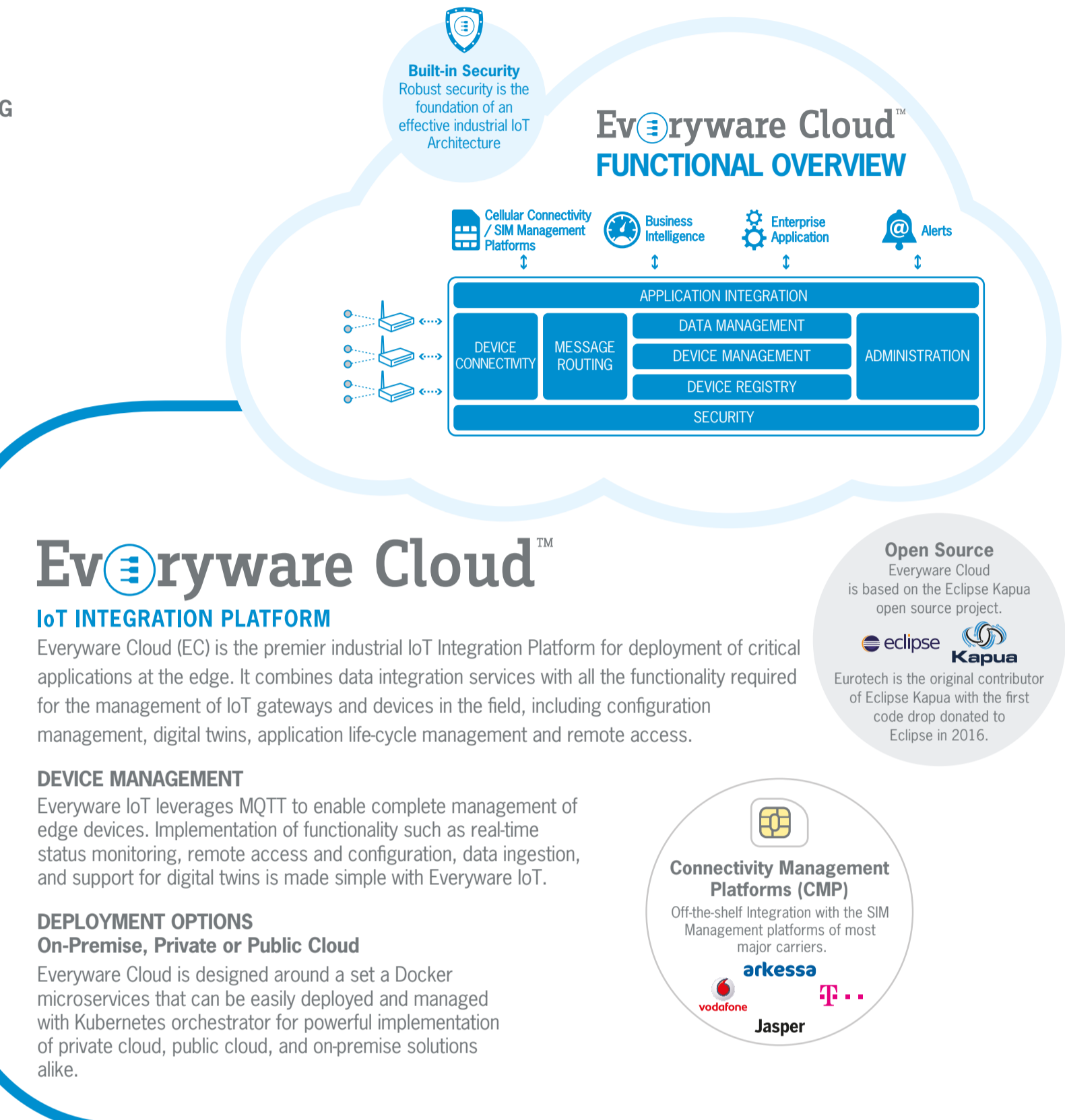
#### ReliaCELL Cellular Connectivity Global Certifications

The rugged ReliaCELL cellular modem eliminates many of the challenges associated with global cellular deployments. It comes ready to deploy with a wide variety of carrier and global certifications already in place. This simplifies the design process and reduces costs, while also accelerating time-to-market.

Verizon, Sprint, AT&T, T-Mobile, Bell, Rogers

### Everyware Linux

Everyware Linux is a Yocto-based Linux distribution optimized for Eurotech Multi-service IoT Gateways. It provides drivers for all the gateway I/O interfaces and a complete application development SDK. Everyware Linux focuses on secure deployment optionally providing secure boot, platform hardening and custom image services. Support and maintenance services are also offered for periodical vulnerability scans and distribution of emergency patches.

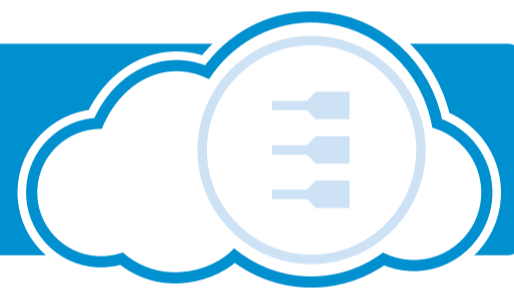


# ware IoT

MANAGED.

SMART GRID AND POWER DISTRIBUTIONS  
ENERGY MANAGEMENT  
INTELLIGENT BUILDINGS

REMOTE DEVICE MANAGEMENT  
DATA ANALYSIS AND MONITORING  
CONNECTED HEALTHCARE



**EC**

Ev<sup>ery</sup>ware Cloud™

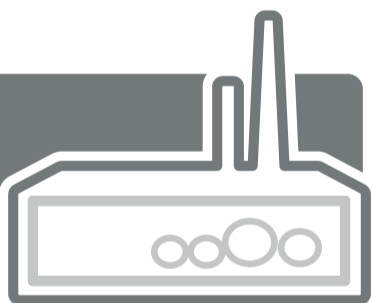
ation Protocols



**ESF**

Ev<sup>ery</sup>ware Software Framework

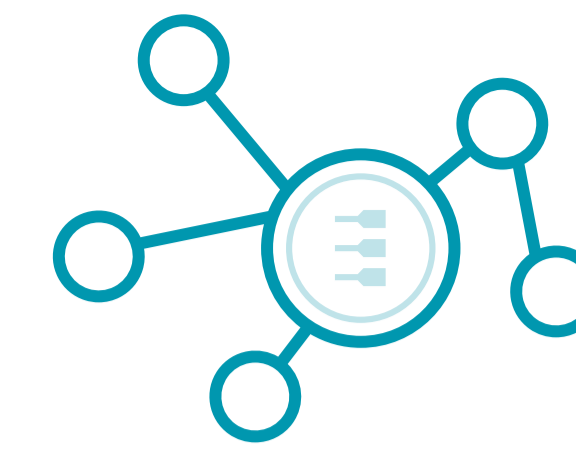
Gateway



and Interfaces



**EUROTECH**  
eurotech.com



# Ev<sup>ery</sup>ware

OPEN. INTEGRATED.

INDUSTRY 4.0  
INDUSTRIAL AUTOMATION AND  
SUPPLY CHAIN MANAGEMENT  
REAL-TIME EQUIPMENT MONITORING  
AND DIAGNOSTICS

ROLLING STOCK AND  
RAILWAY MANAGEMENT  
PUBLIC TRANSPORT  
INTELLIGENT MOBILITY  
FLEET MANAGEMENT



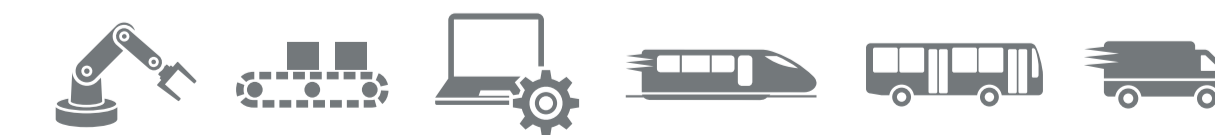
**IoT Integration Platform**

IoT Communic

**IoT Edge Framework**

**Multi-service IoT Edge**

OT / Field Protocols



# Ev<sup>ery</sup>ware IoT

OPEN. INTEGRATED. MANAGED.

- Open & Interoperable**
- Eliminate Risk: Built on open-source software for optimal flexibility and support
  - Reduce Implementation Costs: Simple and open integration with existing applications
- Integrated & Modular**
- Minimize Time to Revenue: Includes everything needed to get data to cloud
  - Optimize Resources: Flexible and modular implementation allows for efficient IoT deployment
- Managed & Secure**
- Be Safe: Deliver world-class protection against unauthorized access and data snooping
  - Deploy Anywhere: Remotely provision, manage and update edge devices

**EUROTECH**  
Imagine. Build. Succeed.



**EUROTECH**  
eurotech.com

North America  
sales.na@eurotech.com

Latin America  
sales.la@eurotech.com

Europe, Middle East and Africa  
sales.emea@eurotech.com

Asia Pacific  
sales.ap@eurotech.com

Note: The information in this document is subject to change without notice and should not be construed as a commitment by Eurotech. While reasonable precautions have been taken, Eurotech assumes no responsibility for any errors that may appear in this document. All trademarks or registered trademarks are the properties of their respective companies. © Copyright Eurotech 2019. All rights reserved.